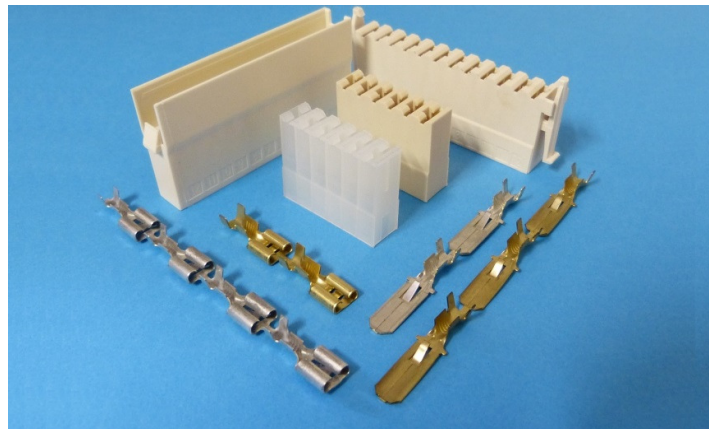


# CONNETTORI CT5 passo 5,00

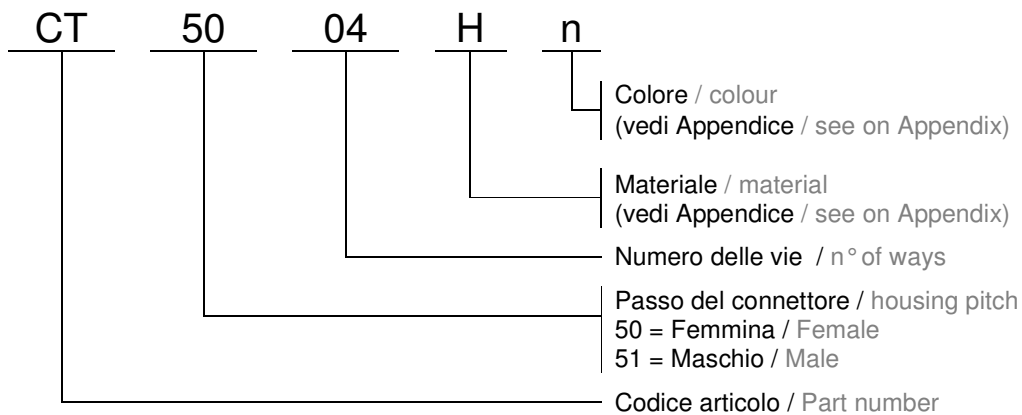
## 5mm Pitch wire-to-wire CONNECTORS



### Descrizione/ Description

Connettori multivia con passo 5mm per terminali serie 6,3mm.  
Multiway connectors with a 5mm pitch for 6,3 quick-connect terminals.

### Identificazione / identification



### Materiali e Finiture / Materials and Platings

Connettori / Housings : PA66 UL94V2 and GWT 750°C Noflame  
Terminali / Terminals : Ottone o Ottone stagnato / Brass or Tin plated Brass

### Caratteristiche Elettriche / Electrical Performances

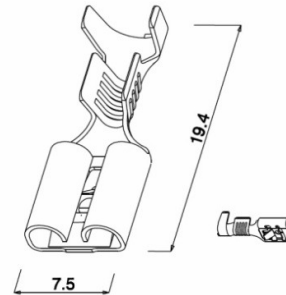
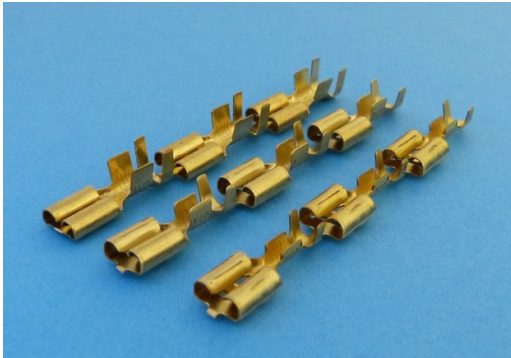
Tensione di lavoro - Voltage Rating : 250V  
Portata di corrente - Current Rating : 20A max per contact / each contact  
Sezione di aggiratura - Applicable Wire : 0,50 - 4,00mm<sup>2</sup> , 20-10 AWG

# CONNETTORI CT5 passo 5,00

## 5mm Pitch wire-to-wire CONNECTORS

### TERMINALE FEMMINA CON DENTINO

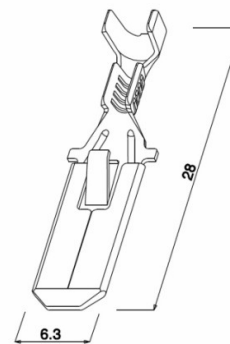
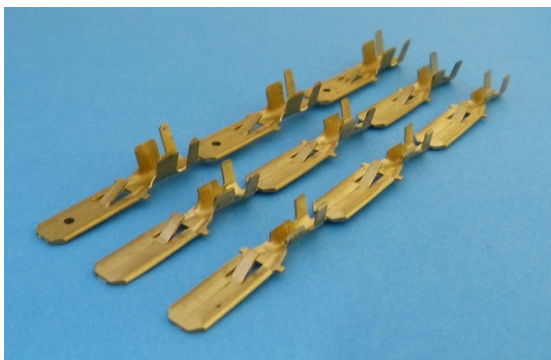
#### QUICK-CONNECT RECEPTACLE WITH CHECK TOOTH



CODICE Code	SEZIONE CAVO Wire size		SPESSORE Thickness	MATERIALE Material	TRATTAMENTO Treatment	CONF.NE Package	
	mm <sup>2</sup>	AWG					
FF638221	0,5-1,0	20-17	0,32	Ottone / Brass	---	10.000	UL
FF638222	0,5-1,0	20-17	0,32	Ottone / Brass	Stagnato / Tin plated	10.000	UL
FF638521	0,75-2,5	18-13	0,32	Ottone / Brass	---	10.000	UL
FF638522	0,75-2,5	18-13	0,32	Ottone / Brass	Stagnato / Tin plated	10.000	UL
FF638621	3,0-6,0	13-10	0,30	Ottone / Brass	---	15.000	UL
FF638622	3,0-6,0	13-10	0,30	Ottone / Brass	Stagnato / Tin plated	15.000	UL

### TERMINALE MASCHIO CON DENTINO

#### QUICK-CONNECT TAB WITH CHECK TOOTH



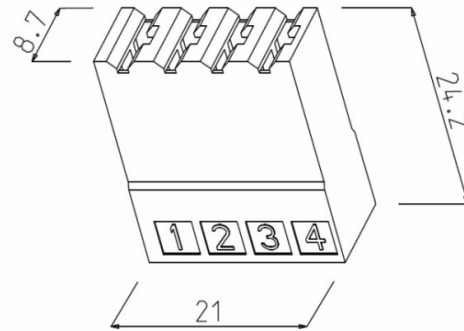
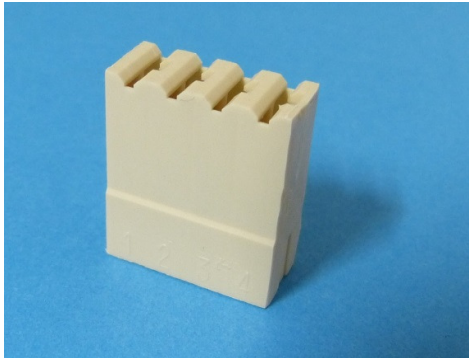
FMF638231	0,5-1	20-17	0,40	Ottone / Brass	---	10.000	UL
FMF638232	0,5-1	20-17	0,40	Ottone / Brass	Stagnato / Tin plated	10.000	UL
FMF638531	0,75-2,5	18-13	0,40	Ottone / Brass	---	10.000	UL
FMF638532	0,75-2,5	18-13	0,40	Ottone / Brass	Stagnato / Tin plated	10.000	UL
FMF638631	3,0-6,0	13-10	0,40	Ottone / Brass	---	12.000	UL
FMF638632	3,0-6,0	13-10	0,40	Ottone / Brass	Stagnato / Tin plated	12.000	UL

# CONNETTORI CT5 passo 5,00

## 5mm Pitch wire-to-wire CONNECTORS

### CONNETTORE 4 VIE FEMMINA

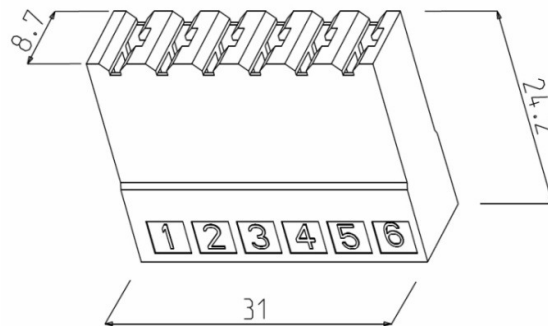
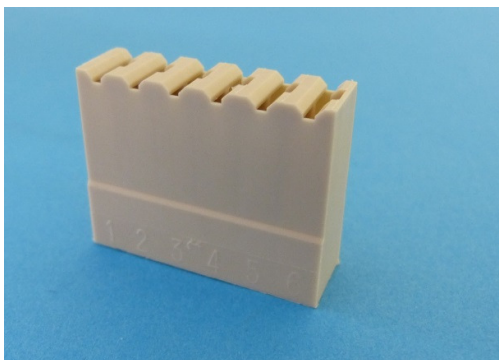
#### 4 WAYS FEMALE HOUSING



CODICE Code	CONFEZIONE Package	COLORE Colour	MATERIALE Material	UL94	Note
<b>CT5004</b>	2.500	Neutro /Neutral	Nylon 66	UL94-V2	RTI 105
<b>CT5004V0</b>	2.500	Neutro /Neutral	Nylon 66	UL94-V0	RTI 140
<b>CT5004H</b>	2.500	Neutro /Neutral	Nylon 66	UL94-V2	GWT
<b>CT5004Z</b>	2.500	Neutro /Neutral	Nylon 66	UL94-V0	GWT

### CONNETTORE 6 VIE FEMMINA

#### 6 WAYS FEMALE HOUSING

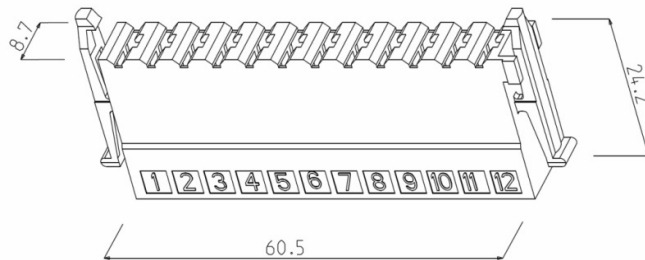
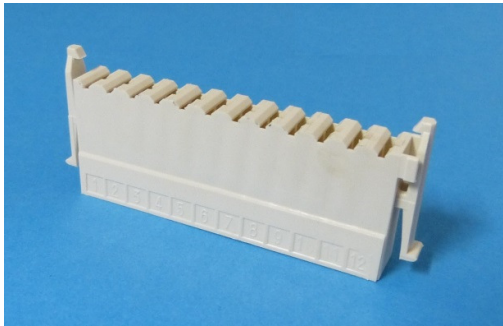


<b>CT5006</b>	2.500	Neutro /Neutral	Nylon 66	UL94-V2	RTI 105
<b>CT5006V0</b>	2.500	Neutro /Neutral	Nylon 66	UL94-V0	RTI 140
<b>CT5006H</b>	2.500	Nero /Black	Nylon 66	UL94-V2	GWT
<b>CT5006Z</b>	2.500	Neutro /Neutral	Nylon 66	UL94-V0	GWT

# CONNETTORI CT5 passo 5,00

## 5mm Pitch wire-to-wire CONNECTORS

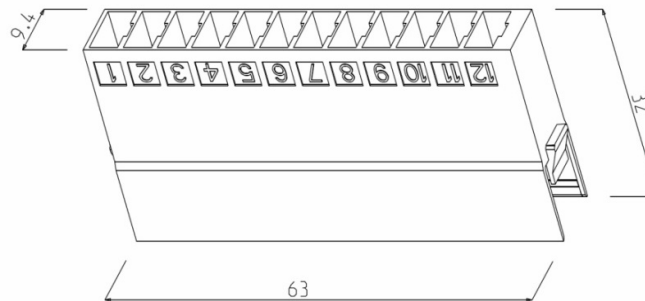
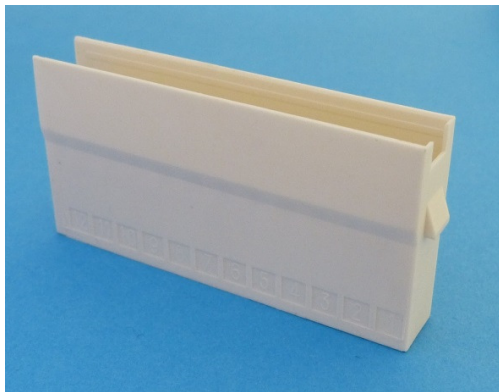
### CONNETTORE 12 VIE FEMMINA 12 WAYS FEMALE HOUSING



Adatto al Timer Eaton - Mating Eaton Timer

CODICE Code	CONFEZIONE Package	COLORE Colour	MATERIALE Material	UL94	Note
<b>CT5012</b>	1.250	Neutro /Neutral	Nylon 66	UL94-V2	RTI 105
<b>CT5012V0</b>	1.250	Neutro /Neutral	Nylon 66	UL94-V0	RTI 140
<b>CT5012H</b>	1.250	Neutro /Neutral	Nylon 66	UL94-V2	GWT
<b>CT5012Z</b>	1.250	Neutro /Neutral	Nylon 66	UL94-V0	GWT

### CONNETTORE 12 VIE MASCHIO 12 WAYS MALE HOUSING



<b>CT5112</b>	1.500	Neutro /Neutral	Nylon 66	UL94-V2	RTI 105
<b>CT5112V0</b>	1.500	Neutro /Neutral	Nylon 66	UL94-V0	RTI 140
<b>CT5112H</b>	1.500	Nero /Black	Nylon 66	UL94-V2	GWT
<b>CT5112Z</b>	1.500	Neutro /Neutral	Nylon 66	UL94-V0	GWT