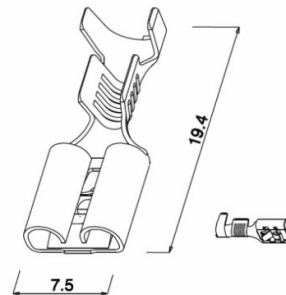
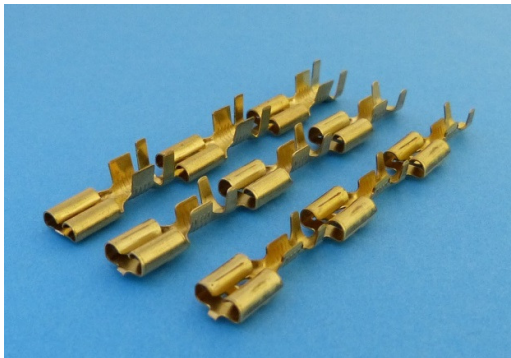


# SERIE 6,3 TERMINALI e CONNETTORI

## .250" Quick Connect Terminals and Connectors

### TERMINALE FEMMINA CON DENTINO

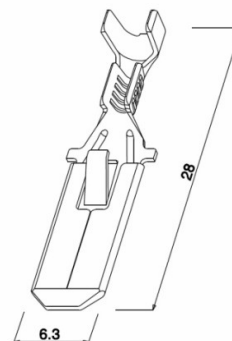
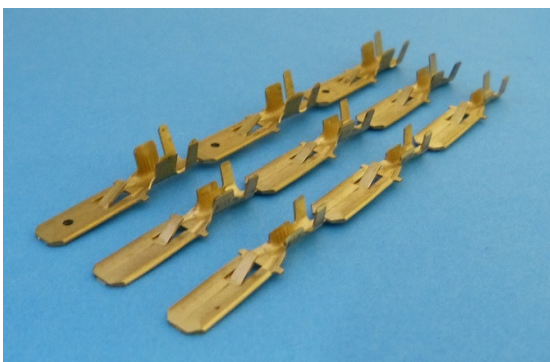
#### QUICK-CONNECT RECEPTACLE WITH CHECK TOOTH



CODICE Code	SEZIONE CAVO Wire size		SPESSORE Thickness	MATERIALE Material	TRATTAMENTO Treatment	CONF.NE Package	
	mm <sup>2</sup>	AWG					
<b>FF638221</b>	0,5-1	20-17	0,32	Ottone / Brass	---	10.000	UL
<b>FF638222</b>	0,5-1	20-17	0,32	Ottone / Brass	Stagnato / Tin plated	10.000	UL
<b>FF638521</b>	0,75-2,5	18-13	0,32	Ottone / Brass	---	10.000	UL
<b>FF638522</b>	0,75-2,5	18-13	0,32	Ottone / Brass	Stagnato / Tin plated	10.000	UL
<b>FF638621</b>	2,50-4,0	13-10	0,30	Ottone / Brass	---	10.000	UL
<b>FF638622</b>	2,50-4,0	13-10	0,30	Ottone / Brass	Stagnato / Tin plated	10.000	UL

### TERMINALE MASCHIO CON DENTINO

#### QUICK-CONNECT TAB WITH CHECK TOOTH



<b>FM638231</b>	0,5-1	20-17	0,40	Ottone / Brass	---	10.000	UL
<b>FM638232</b>	0,5-1	20-17	0,40	Ottone / Brass	Stagnato / Tin plated	10.000	UL
<b>FM638531</b>	0,75-2,5	18-13	0,40	Ottone / Brass	---	10.000	UL
<b>FM638532</b>	0,75-2,5	18-13	0,40	Ottone / Brass	Stagnato / Tin plated	10.000	UL
<b>FMF638631</b>	2,50-4,0	13-10	0,40	Ottone / Brass	---	10.000	UL
<b>FMF638632</b>	2,50-4,0	13-10	0,40	Ottone / Brass	Stagnato / Tin plated	10.000	UL