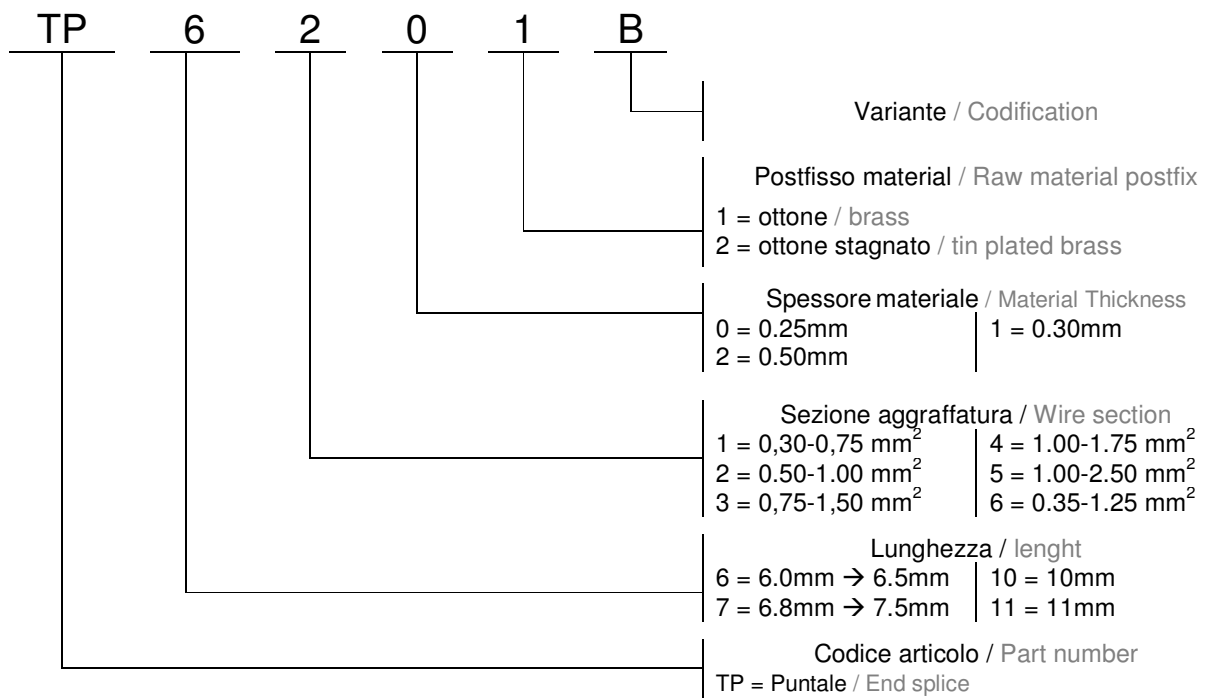


TERMINALI a PUNTALE END SPLICES



Identificazione Occhielli e Forcelle/ Ring and Fork terminals identification



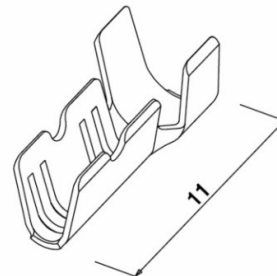
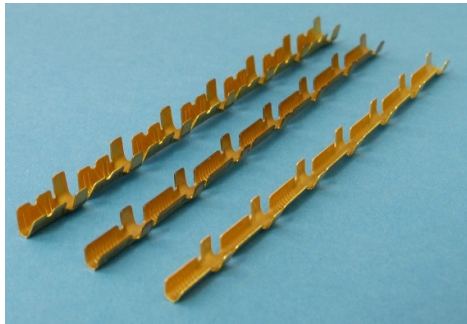
TERMINALI a PUNTALE

END SPLICES

11mm CON ALETTE GUAINA

11mm WITH INSULATION BARREL

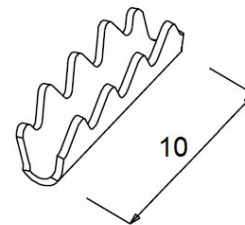
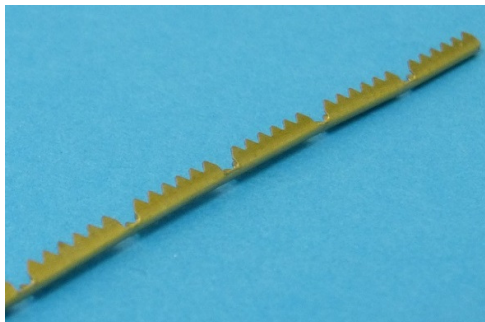
Spessore materiale 0,30 mm / Material Thickness 0,30mm



CODICE Code	SEZIONE CAVO Wire size		MATERIALE Material	TRATTAMENTO Treatment	CONFEZIONE Package	NOTE
	mm ²	AWG				
TP11211	0,5-1	20-17	Ottone / Brass	---	40.000	
TP11311	0,75-1,5	18-14	Ottone / Brass	---	40.000	
TP11511	0,75-2,5	18-13	Ottone / Brass	---	40.000	

10mm

Spessore materiale 0,25 mm / Material Thickness 0,25mm

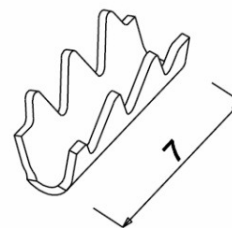
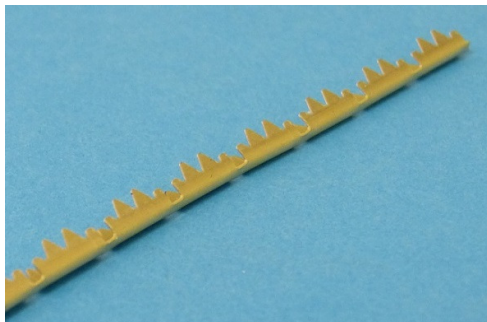


CODICE Code	SEZIONE CAVO Wire size		MATERIALE Material	TRATTAMENTO Treatment	CONFEZIONE Package	NOTE
	mm ²	AWG				
TP10201	0,75	18	Ottone / Brass	---	120.000	
TP10202	0,75	18	Ottone / Brass	Stagnato / Tin plated	120.000	<i>New</i>

TERMINALI a PUNTALE END SPLICES

7mm

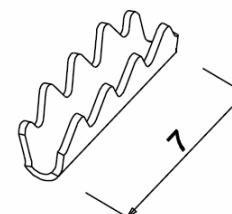
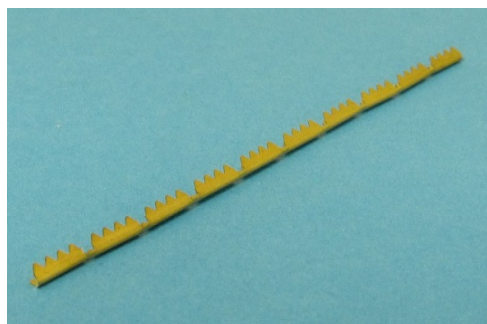
Spessore materiale 0,30 mm / Material Thickness 0,30mm



CODICE Code	SEZIONE CAVO Wire size		MATERIALE Material	TRATTAMENTO Treatment	CONFEZIONE Package	NOTE
	mm ²	AWG				
TP7311	0,5-1,5	22-15	Ottone / Brass	---	60.000	
TP7312	0,5-1,5	22-15	Ottone / Brass	Pre stagnato / Pre-tinned	60.000	

7mm

Spessore materiale 0,25 mm / Material Thickness 0,25mm

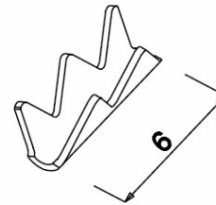
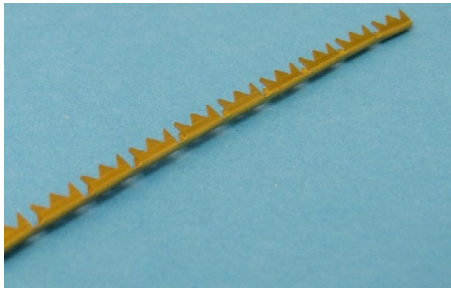


CODICE Code	SEZIONE CAVO Wire size		MATERIALE Material	TRATTAMENTO Treatment	CONFEZIONE Package	NOTE
	mm ²	AWG				
TP7101	0,3-0,75	22-18	Ottone / Brass	---	100.000	

TERMINALI a PUNTALE END SPLICES

6mm

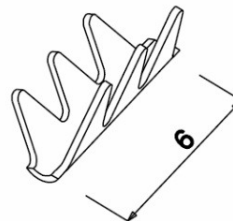
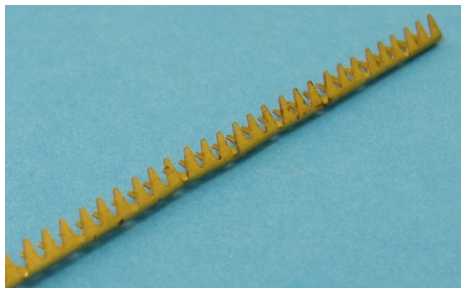
Spessore materiale 0,25 mm / Material Thickness 0,25mm



CODICE Code	SEZIONE CAVO Wire size		MATERIALE Material	TRATTAMENTO Treatment	CONFEZIONE Package	NOTE
	mm ²	AWG				
TP6201	0,5-1	20-17	Ottone / Brass	---	50.000	

6mm

Spessore materiale 0,25 mm / Material Thickness 0,25mm



CODICE Code	SEZIONE CAVO Wire size		MATERIALE Material	TRATTAMENTO Treatment	CONFEZIONE Package	NOTE
	mm ²	AWG				
TP6201B	0,5-1	20-17	Ottone / Brass	---	50.000	